

Instructions



Journey SHY1 & SHY2

Glass replacement

We hope you will enjoy using this product and follow these instructions to ensure correct installation. If you have any questions or comments, please do not hesitate to contact us by mail on:

info@andtradition.com

Journey SHY1 & SHY2 Glass replacement

Please read these instructions carefully and retain them for future reference to ensure that the product is used correctly. For your own safety, please study each step of this instruction manual first. &Tradition is not responsible for any faults or damages caused by not following these instructions correctly. Do not modify this product in any way.

Content

- A Replacement glass (for Journey SHY1 & SHY2)

Tools needed

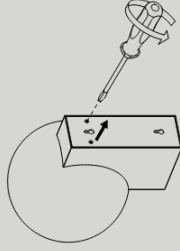
- Screwdriver

Safety precautions

- Dispose of plastic bag from packaging and do not allow children to play with it.
- Keep product well out of children's reach.
- The lamp is only intended for interior use.

Cleaning instructions

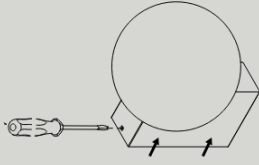
- Wipe surface of the glass shade with a soft, damp sponge or cloth, and wipe immediately with a dry cloth.
- Do not use any abrasive cleaning tools such as steel wool, scouring sponges or stiff brushes.



Step 1

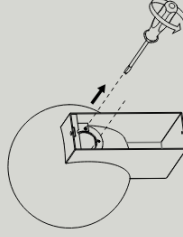
SHY1

Unscrew the two screws in the bottom of the lamp. Support the glass while handling the product.



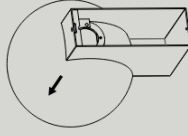
SHY2

Detach the lamp from the wall bracket by unscrewing the screws on the top and bottom. Lift the base of the wall bracket.



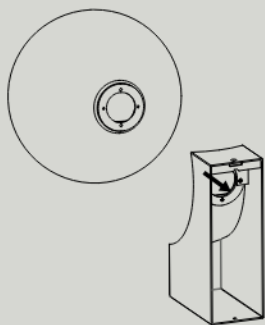
Step 2

Unscrew the left and right screws inside the lamp base while holding the glass shade.



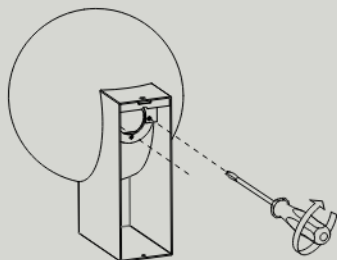
Step 3

Carefully detach the glass from the lamp base.



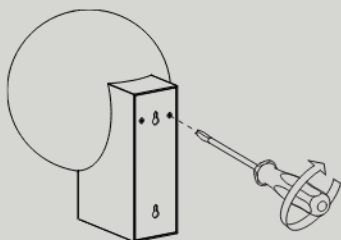
Step 4

Attach the new glass to the lamp base.



Step 5

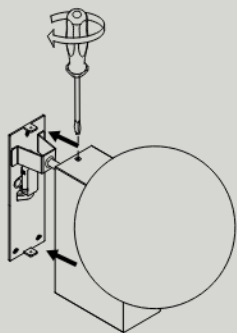
Fasten the left and right screws inside the lamps gently while holding the glass shade.



Step 6

SHY1

Tighten the screws while making sure the glass is fully secured.



SHY2

Reattach the lamp to the wall bracket and tighten the screws on the top and bottom.

&Tradition®